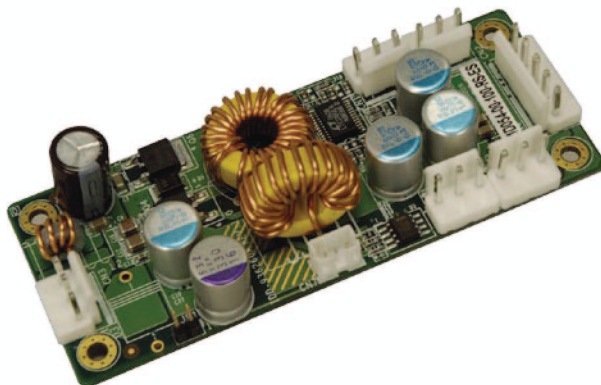


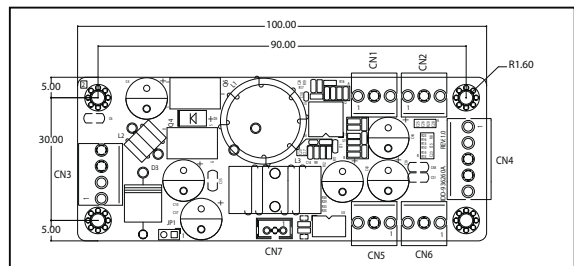
IDD-936260A 60W DC/DC Converter Module



Features

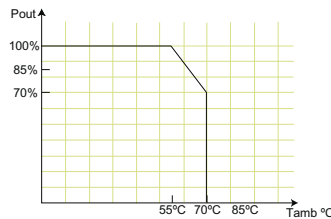
- Wide Input Range: 9-36V DC
- AT or ATX Mode On/Off
- Up to 90% Efficiency
- RoHS Compliant
- Compact Size

Dimensions (Millimeters)



Specifications

- Output: 12V@3A (Max.), 5V@10A (Max.) & 5VSB@0.5A (Max.)
Max. Total Output: 60W
- Input: 9VDC to 36VDC
- Performance Characteristics
Noise & Ripple: <240mV
Line Regulation: <50mV
Load Regulation: <100mV
Efficiency: Up to 90%
- Dimensions: 40mm x 100mm
- Weight: NW: 58g
- Operating Temperature: -20°C ~ 70°C



Packing List

- 1 x IDD-936260A
- 1 x QIG

PIN Assignments

Input Power Connector

CN3	Pin 1	Pin 2	Pin 3	Pin 4
	VIN	VIN	GND	GND

Output Power Connector

CN4	Pin 1	Pin 2	Pin 3	Pin 4	Pin 5
	+5V	+5V	GND	GND	+12V

CN1 CN2 CN5 CN6	Pin 1	Pin 2	Pin 3
	+5V	GND	+12V

ATX Mode Connector

CN7	Pin 1	Pin 2	Pin 3
	5VSB	GND	PS_ON

Ordering Information

Part No.	Description
IDD-936260A-R10	60W DC/DC 9~36V input; 12V, 5V & 5VSB output
CB-5PSBC-RS	20cm Cable to SBC Power Input
CB-JST3PSW-RS	30cm Cable ON/Off Switch
CB-JST3P001-RS	30cm 5VSB, PS_ON Wire to SBC
CB-3PSATA-RS	10cm Cable for SATA Power
CB-3PIDE-RS	10cm Cable for IDE HDD Power
CB-P1LP4-RS	20cm Cable for FSP0601AD101C 60W/UP0451E12P 45W/UP0251E12PL 25W AC-DC adapter
CB-MD4P4-RS	20cm Cable for 63000-FSP120AAB-RS 120W AC-DC adapter
CB-NOLP4-RS	20cm Cable for Terminal Block DC Input

Wire Harness Selection Guide

DC Input (CN3)



Option 1.
PN: CB-P1LP4-RS
Cable for FSP0601AD101C 60W/UP0451E12P 45W/UP0251E12PL 25W AC-DC adapter



Option 2.
PN: CB-MD4P4-RS
Cable for 63000-FSP120AAB-RS 120W AC-DC adapter



Option 3.
PN: CB-NOLP4-RS
Cable for Terminal Block

I/O Power (CN1, CN2, CN5 & CN6)



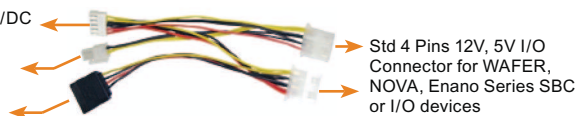
Option 1.
PN: CB-3PSATA-RS
Cable for SATA

Option 2.
PN: CB-3PIDE-RS
Cable for IDE HDD or any STD 4 pins I/O devices

SBC Main Power (CN4)

Option 1.
PN: CB-5PSBC-RS

5 Pins connector to DC/DC Power Modules CN4
12V only connector for NANO Series SBC
Cable for SATA HDD



Std 4 Pins 12V, 5V I/O Connector for WAFER, NOVA, Enano Series SBC or I/O devices

Power On/Off (CN7)



Option 1.
PN: CB-JST3PSW-RS
Cable with On/Off Switch



Option 2.
PN: CB-JST3P001-RS
Cable to SBC (5VSB & PS_ON)