

HSL-DI32-M-N 32-CH Discrete Input Module



Specifications

- ◆ Slave ID consumption: 2 consecutive from odd
- ◆ 32-CH digital input
 - N: for NPN sinking type sensor or dry contact
- ◆ Photo couple isolation voltage: 2500Vrms
- ◆ Input impedance: 4.7KΩ
- ◆ Input current: ±10mA(Max), ±12.5mA(Peak)
- ◆ Input voltage: ±40V (Max)
- ◆ LED Indicator: Power, Link and Input status
- ◆ Power Supply: 10V to +30V_{DC}
- ◆ Operating Temperature: 0 to 60°C
- ◆ Storage Temperature: -20 to 80°C
- ◆ Power Consumption: 1.8W

HSL-DO32-M-N 32-CH Discrete Output Module



Specifications

- ◆ Slave ID consumption: 2 consecutive from odd
- ◆ 32-CH digital output
 - N: NPN sinking type output
- ◆ Switch capacity: Single channel 500mA; all channels 60mA at 24VDC
- ◆ Photo couple isolation voltage: 2500Vrms
- ◆ Response time: ON → OFF: 180μs, OFF → ON : 1.2μs
- ◆ LED indicator: Power, Link and Output status
- ◆ Power supply: 10V to +30 V_{DC}
- ◆ Operating temperature: 0 to 60°C
- ◆ Storage temperature: -20 to 80°C
- ◆ Power consumption: 1.8W

HSL-DI16DO16-M-NN 16-CH Discrete Input 16-CH Discrete Output Module



Specifications

- ◆ Slave ID consumption: 1
- ◆ 16-CH digital input and 16-CH digital output
 - NN: for NPN sinking type sensor input or dry contact and NPN sinking type output
- ◆ Photo couple isolation voltage: 2500Vrms
- ◆ Input impedance: 4.7KΩ
- ◆ Input current: ±10mA(Max) , ±12.5mA(Peak)
- ◆ Input voltage: ±40V (Max)
- ◆ Output switching capacity: Single channel 500mA; all channels 60mA at 24V_{DC}
- ◆ Output response time: ON →OFF: 180μs, OFF →ON: 1.2μs
- ◆ LED indicator: Power, Link and I/O status
- ◆ Power supply: 10V to +30 V_{DC}
- ◆ Operating temperature: 0 to 60°C
- ◆ Storage temperature: -20 to 80°C
- ◆ Power consumption: 1.8W

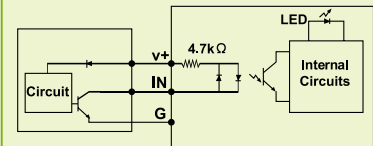
HSL-R8DI16-M-N 8-CH Relay Output 16-CH Discrete Input Module



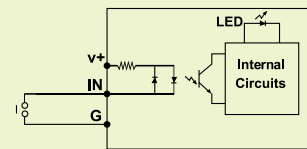
Specifications

- ◆ Slave ID consumption: 1
- ◆ 8-CH relay output and 16-CH digital input
 - N: for NPN sinking type sensor or contact
- ◆ Photo couple isolation voltage: 2500Vrms
- ◆ Input impedance: 4.7KΩ
- ◆ Input current: ±10mA(Max) , ±12.5mA(Peak)
- ◆ Input voltage: ±40V (Max)
- ◆ Relay rating: 30VDC / 2A, 250VAC / 2A
- ◆ Relay switching frequency: Max. 20 times/minute at rating load
- ◆ Relay response time: ON → OFF: Max. 3ms, OFF → ON: Max. 6ms
- ◆ Nominal voltage for relay: 24V_{DC}
- ◆ Input impedance: 4.7KΩ
- ◆ Input current: ±10mA(Max), ±12.5mA(Peak)
- ◆ Input voltage: ±40V (Max)
- ◆ LED indicator: Power, Link and I/O status
- ◆ Power supply: 10V to +28V_{DC}
- ◆ Operating temperature: 0 to 60°C
- ◆ Storage temperature: -20 to 80°C
- ◆ Power consumption: 1.8W

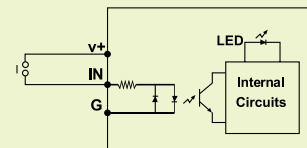
NPN Sinking type sensor Input



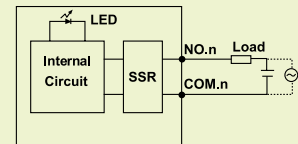
Dry Contact Input



Wet Contact Input



Relay Output



NPN Sinking Output

