

IDS-5012

>> Industrial 1-port RS232/422/485 to 2-port 10/100Base-T(X) Device Server

- Redundant Dual Ethernet Ports: Recovery time < 10ms
- Switch Mode Supported: Daisy Chain support to reduce usage of switch ports
- NAT-pass through: User can manage IDS-5012 through NAT router
- Redundant Power Inputs: 12~48VDC on power jack and terminal block
- Redundant multiple host devices: 5 simultaneous in Virtual COM, TCP Server, TCP Client mode, UDP
- Secured Management by HTTPS and SSH
- Versatile Modes: Virtual Com, Serial Tunnel, TCP Server, TCP Client, UDP
- Event Warning by Syslog, Email, SNMP trap, and Beeper
- Various Windows O.S. supported: Windows NT/2000/XP/ 2003/VISTA



> Features

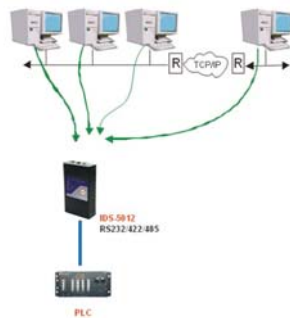
- Dual redundant Ethernet port support redundant mode (Recovery time < 10ms)
- Ethernet switch mode enable Daisy Chain
- Redundant 5 multiple host devices supported to protect your industrial network
- Versatile modes & event alarm by e-mail
- HTTPs & SSH protocol supported for secured management
- NAT router pass through
- IP table to prevent access from unauthorized IP address
- Configurable by Web-based and Windows utility (**DS-Tool**)
- Dual redundant DC power inputs of terminal block and power jack
- Rigid IP-30 housing design
- DIN-Rail and panel mounting enabled

> Introduction

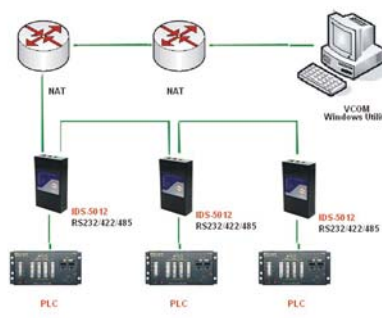
IDS-5012 is an innovative 1 port RS232/422/485 to 2 ports LAN redundant device server. To assure the agility and security of critical data, IDS-5012 offers many powerful features for HW & SW redundant functions. When the connection between master-link and LAN fails, IDS-5012 can automatically switch to another LAN port within 10mS, and still guarantees a non-stop connection. IDS-5012 also supports switch mode, users can use Daisy Chain to reduce the usage of Ethernet switch ports. Secondly, IDS-5012 can simultaneously transfer data into 5 host PCs. This feature can assure all critical data that saved in different host PCs to avoid Ethernet break or host PCs failure. Thirdly, IDS-5012 provides dual redundant power inputs on DC power jack and terminal block. IDS-5012 also provides NAT pass through function so that users are able to manage IDS-5012 inside or outside the NAT router. It is easy for different IP domain users to use IDS-5012. Therefore, IDS-5012 is one of the best communication redundant solutions for application of serial devices.

> DS-Tool

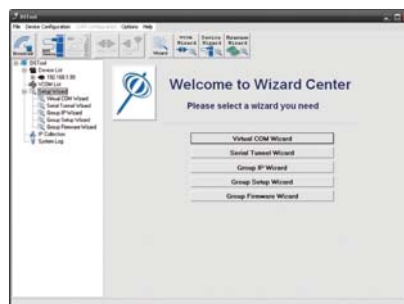
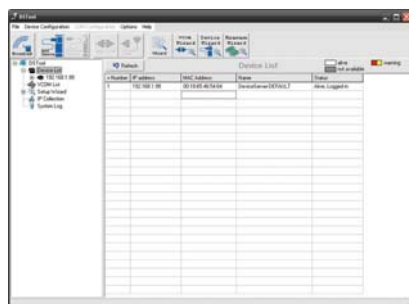
In practical operation of serial device servers, Windows utility (DS-Tool) is supported. This utility is very helpful for you to manage and monitor all of industrial device servers on the industrial network.



Network connection

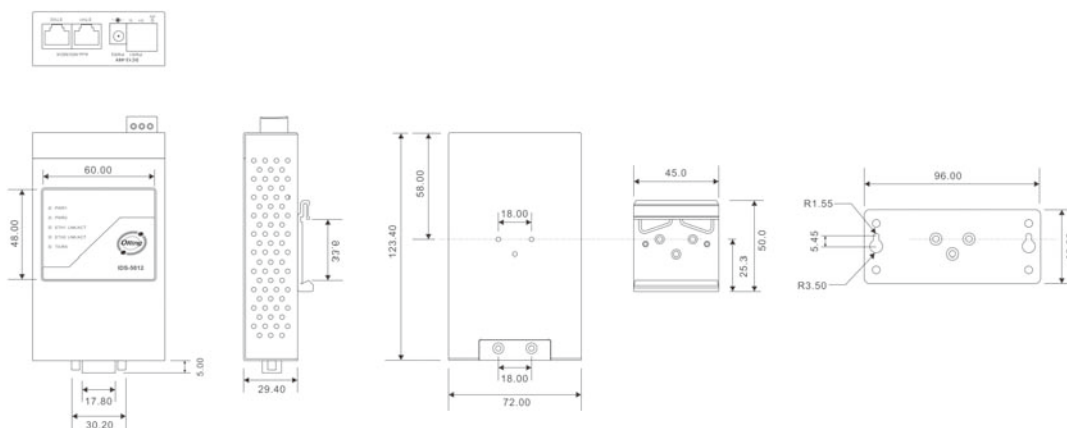


Topology View



Monitoring and Configuration interface

> Dimension



Unit=mm

> Specifications

ORing Device Server Model	IDS-5012
Physical Ports	
10/100Base-T(X) Ports in RJ45 Auto MDI/MDIX	2
Serial Ports	
Connector	DB9 x 1
Operation Mode	RS232 / RS422 / 4(2)-Wire RS485. Which can be configured by DS-Tool
Serial Baud Rate	110 bps to 460.8 Kbps
Data Bits	5, 6, 7, 8
Parity	odd, even, none, mark, space
Stop Bits	1, 1.5, 2

RS-232	TxD, RxD, RTS, CTS, DTR, DSR, DCD, RI, GND
RS-422	Tx+,Tx-, Rx+, Rx-,GND
RS-485 (4-wire)	Tx+,Tx-, Rx+, Rx-,GND
RS-485 (2-wire)	Data+, Data-,GND
Flow Control	XON/XOFF, RTS/CTS, DTR/DSR
LED indicators	
Power indicator	PWR 1(2) / Ready: Red On: Power is on and booting up. Red Blinking: Indicates an IP conflict, or DHCP or BOOTP server did not respond properly. Green On: Power is on and functioning Normally. Green Blinking: Located by Administrator.
10/100Base-T(X) RJ45 port indicator	Green for port Link/Act at 100Mbps. Amber for port Link/Act at 10Mbps.
Serial TX / RX LEDs:	Red: Serial port is receiving data Green: Serial port is transmitting data
Power	
Redundant Input power	Dual DC inputs. 12-48VDC on 3-pin terminal block and power jack
Power consumption (Typ.)	4 watts
Overload current protection	Present
Physical Characteristic	
Enclosure	IP-30
Dimension (W x D x H)	72(W) x 29.4(D) x 123.4(H) mm (2.83x1.16x4.86 inch.)
Weight (g)	327 g
Environmental	
Storage Temperature	-40 to 85°C(-40 to 185°F)
Operating Temperature	-10 to 60°C (14 to 140°F)
Operating Humidity	5% to 95% Non-condensing
Reverse polarity protection	Present on terminal block
Regulatory approvals	
EMI	FCC Part 15, CISPR (EN55022) class A
EMS	EN61000-4-2 (ESD), EN61000-4-3 (RS), EN61000-4-4 (EFT), EN61000-4-5 (Surge), EN61000-4-6 (CS), EN61000-4-8, EN61000-4-11
Shock	IEC60068-2-27
Free Fall	IEC60068-2-32
Vibration	IEC60068-2-6
Safety	EN60950
Warranty	5 years

> Ordering Information

IDS-50 **A** **B**



Code Definition	Serial Port Number	Ethernet Port Number
Option	- 1: 1 port	- 2: 2 port

Available Model	Model Name	Description
	IDS-5012	Industrial 1-port RS232/422/485 to 2-port 10/100Base-T(X) Device Server