

IDS-5042/5042+

>> Industrial 4-port RS232/422/485 to 2-port 10/100Base-T(X) Device Server

- Redundant Dual Ethernet Ports: Recovery time < 10ms
- Switch Mode Supported: Daisy Chain support to reduce usage of switch ports
- NAT-pass through: User can manage IDS-5042 through NAT router
- Redundant Power Inputs: 12~48VDC on terminal block
- Redundant multiple host devices: 5 simultaneous in Virtual COM, TCP Server, TCP Client mode, UDP
- Secured Management by HTTPS and SSH
- Versatile Modes: Virtual Com, Serial Tunnel, TCP Server, TCP Client, UDP
- Event Warning by Syslog, Email, SNMP trap, and Beeper
- Various Windows O.S. supported: Windows NT/2000/XP/ 2003/VISTA 32-bit



> Features

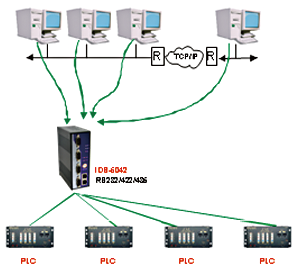
- Dual redundant Ethernet port support redundant mode (Recovery time < 10ms)
- Ethernet switch mode enable Daisy Chain
- Redundant 5 multiple host devices supported to protect your industrial network
- Versatile modes & event alarm by e-mail
- HTTPs & SSH protocol supported for secured management
- NAT router pass through
- IP table to prevent access from unauthorized IP address
- Configurable by Web-based and Windows utility (**DS-Tool**)
- 1KV isolation for PoE PD port of IDS-5042+
- Dual redundant DC power inputs of terminal block
- Rigid IP-30 housing design
- DIN-Rail and panel mounting enabled

> Introduction

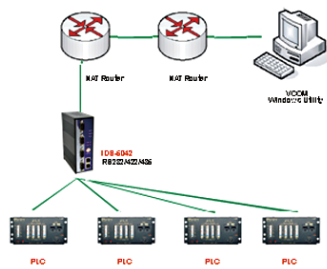
IDS-5042 is an innovative 4 port RS232/422/485 to 2 ports LAN redundant device server. To assure the agility and security of critical data, IDS-5042 offers many powerful features for HW & SW redundant functions. When the connection between master-link and LAN fails, IDS-5042 can automatically switch to another LAN port within 10mS, and still guarantees a non-stop connection. IDS-5042 also supports switch mode, users can use Daisy Chain to reduce the usage of Ethernet switch ports. Secondly, IDS-5042 can simultaneously transfer data into 5 host PCs. This feature can assure all critical data that saved in different host PC to avoid Ethernet break or host PCs failure. Thirdly, IDS-5042 provides dual redundant power inputs on DC power jack and terminal block. IDS-5042 also provides NAT pass through function so that users are able to manage IDS-5042 inside or outside the NAT router. It is easy for different IP domain users to use IDS-5042. In addition, IDS-5042+ also support PoE. PD on ETH2. This feature is fully compliant with IEEE802.3af standard. Therefore, IDS-5042 is one of the best communication redundant solutions for application of serial devices.

> DS-Tool

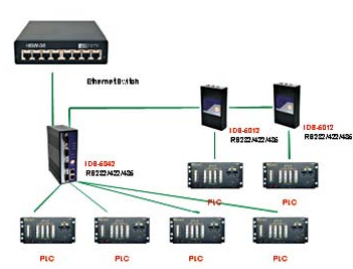
In practical operation of serial device servers, Windows utility (DS-Tool) is supported. This utility is very helpful for you to manage and monitor all of industrial device servers on the industrial network.



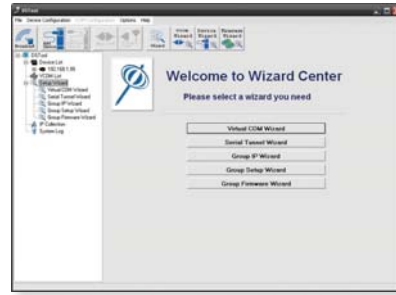
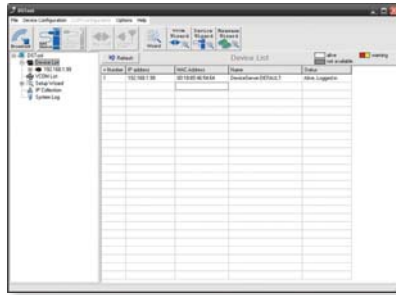
Redundancy 5 Host Devices



NAT Router Pass Through

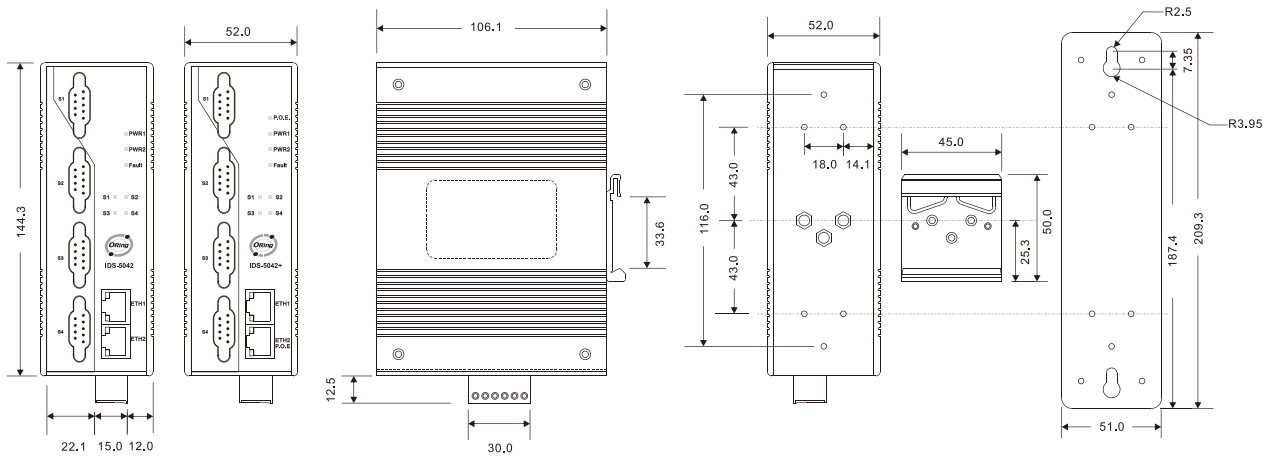


Daisy Chain Switch Mode



Monitoring and Configuration interface

> Dimension



Unit=mm

> Specifications

ORing Device Server Model	IDS-5042	IDS-5042+
Physical Ports		
10/100Base-T(X) Ports in RJ45 Auto MDI/MDIX		2
PoE. Feature	-	PoE.Present at ETH2 Power Device (IEEE 802.3af): IEEE 802.3af compliant input interface Power consumption: 8Watts max. Over load & short circuit protection Isolation Voltage: 1000 VDC min. Isolation Resistance : 10 ⁸ ohms min
Serial Ports		
Connector	DB9 x 4	
Operation Mode	RS232 / RS422 / 4(2)-Wire RS485. Which can be configured by DS-Tool	
Serial Baud Rate	110 bps to 460.8 Kbps	
Data Bits	5, 6, 7, 8	

Parity	odd, even, none, mark, space	
Stop Bits	1, 1.5, 2	
RS-232	TxD, RxD, RTS, CTS, DTR, DSR, DCD, RI, GND	
RS-422	Tx+,Tx-, Rx+, Rx-,GND	
RS-485 (4-wire)	Tx+,Tx-, Rx+, Rx-,GND	
RS-485 (2-wire)	Data+, Data-,GND	
Flow Control	XON/XOFF, RTS/CTS, DTR/DSR	
LED indicators		
Power indicator	PWR 1(2) / Ready: Red On: Power is on and booting up. Red Blinking: Indicates an IP conflict, or DHCP or BOOTP server did not respond properly. Green On: Power is on and functioning Normally. Green Blinking: Located by Administrator.	
10/100Base-T(X) RJ45 port indicator	Green for port Link/Act at 100Mbps. Amber for port Link/Act at 10Mbps.	
Serial TX / RX LEDs:	Red: Serial port is receiving data Green: Serial port is transmitting data	
Power		
Redundant Input power	Dual DC inputs. 12-48VDC on 6-pin terminal block	
Power consumption (Typ.)	5.5 Watts	5.5 Watts
Overload current protection	Present	
Reverse polarity protection	Present on terminal block	
Physical Characteristic		
Enclosure	IP-30	
Dimension (W x D x H)	52(W) x 106.1(D) x 144.3(H) mm (2.05x4.18x5.68 inch.)	
Weight (g)	678 g	682 g
Environmental		
Storage Temperature	-40 to 85°C(-40 to 185°F)	
Operating Temperature	-10 to 60°C (14 to 140°F)	
Operating Humidity	5% to 95% Non-condensing	
Regulatory approvals		
EMI	FCC Part 15, CISPR (EN55022) class A	
EMS	EN61000-4-2 (ESD), EN61000-4-3 (RS), EN61000-4-4 (EFT), EN61000-4-5 (Surge), EN61000-4-6 (CS), EN61000-4-8, EN61000-4-11	
Shock	IEC60068-2-27	
Free Fall	IEC60068-2-32	
Vibration	IEC60068-2-6	
Safety	EN60950	
Warranty	5 years	

> Ordering Information

IDS-50 **A** **B** **C**

Code Definition	Serial Port Number	Ethernet Port Number	PoE Identification
Option	- 4: 4 port	- 2: 2 port	- "+": PoE. PD present at ETH2

Available Model	Model Name	Description
	IDS-5042	Industrial 4-port RS232/422/485 to 2-port 10/100Base-T(X) Device Server
	IDS-5042+	Industrial 4-port RS232/422/485 to 2-port 10/100Base-T(X) Device Server with 1-port PoE PD