

***iPOLiS***

Connect & Protect Life...

The world of ***iPOLiS*** is beginning now.

imagine Peace of Mind  
Anytime, Anywhere

*iPOLiS* network products support fast high-resolution video transmission, MPEG-4/JPEG compression, real-time monitoring through web browsers, diverse protocols, and bi-directional audio transmission. With excellent network performance, *iPOLiS* network products make the world convenient and safe anytime, anywhere.



**SAMSUNG TECHWIN**



# With *iPOLiS*, the world gets even closer.

Fast, easy monitoring through the **Internet** anytime, anywhere!

Speedy, clear digital images! **Real-Time** surveillance!

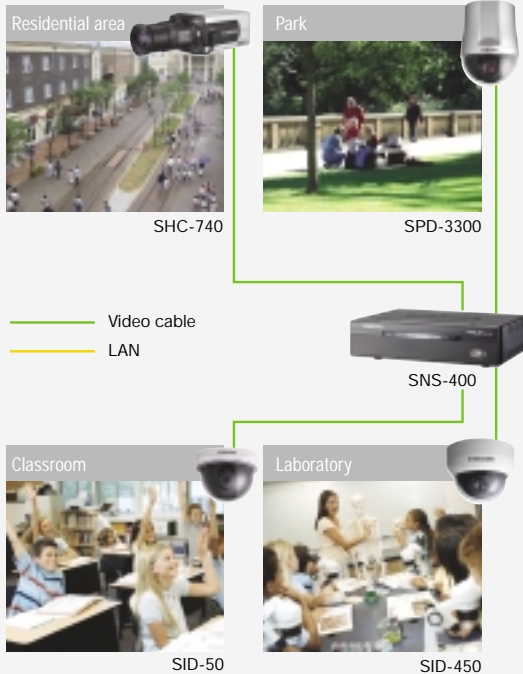
Integrated network control with the **Network Manager**!



A brand that is integrated into Samsung's network products, *iPOLiS* stands for a convenient world (Polis) made safe (Police) through Samsung's superior network performance (Internet Protocol). With *iPOLiS* products' clear digital images transmitted over the Internet, real-time monitoring is possible anywhere with an Internet connection. Easy remote control functions and the use of existing networks minimize installation costs. With *iPOLiS*, experience a world of convenience connected anytime, anywhere.

## Urban security

With the *iPOLiS* network system installed in public facilities such as residential areas, roads, and parks, the safety of residents can be secured in real time.



## Nursery/School/Educational Institute

Views of class or experimental activities at nurseries, schools or educational institutes can be transmitted to parents or other suitable people in real time.

## Shop security

The status of shops, exhibits, or self service stores can be checked and controlled remotely and round the clock.



*Clear Image!  
Fast Transport!  
Easy Control!*

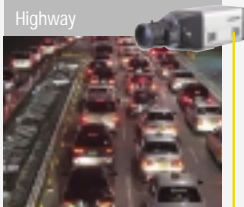


## **iPOLiS**, a high image quality network surveillance system

Samsung **iPOLiS** network cameras and servers facilitate Ethernet interface, easy Internet connection, and allows high-resolution image transmission through MPEG-4/JPEG compression technologies, Web Viewer support and bi-directional audio transmission. The Network Manager, which can control and integrate remote networks, enables a connected world where it is possible for anyone to monitor their homes, offices, schools, etc. from anywhere in real time.

### Road traffic monitoring/Illegal parking control

Real-time road traffic flow or control status can be transmitted; illegal parking can be checked and controlled.



SNC-550



SPD-3000



SNS-100

### Construction site/Logistics warehouse control

Building construction sites or warehouse product flow status can be transmitted to a site office or to managers in real time.



SPD-3300



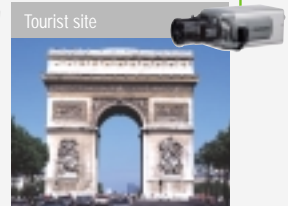
SDC-415



SNS-400



SNC-550



SHC-730

### Promotion of theme parks/tourist sites

With real-time transmission of images of theme parks, tourist sites, or various events, it is possible to enhance the promotional effect.

ernet

### Headquarters/Branches







## Real-time transmission of **VGA** high-resolution images at **30fps**

**iPOLiS** network products can transmit distortion-free images in all resolution and VGA high resolution images at up to 30fps.



VGA 30fps

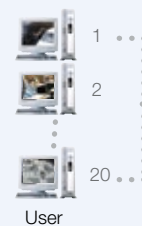


## **MPEG-4/JPEG** compression support

With the selective application of MPEG-4 and JPEG compression formats, the best image quality can be provided flexibly, depending on the available transmission bandwidth.

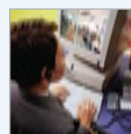
## A built-in web server for simultaneous connection of up to **20 users**

With the built-in web server, real-time monitoring is possible through the Web Viewer and Network Manager over the Internet anytime, anywhere.



## **Bi-directional audio** transmission support

Not only can the sound at a remote site be heard clearly but warning messages from the control room can also be heard at the remote site.



## **E-mail** notification of alarm images

Once the alarm is activated when movement is detected, the site image can be transmitted immediately through the operator's e-mail and FTP server for notification purposes. The images are stored in 2 types of compression format for best quality alarm image between .jpg and .ste (Slim Player file type).



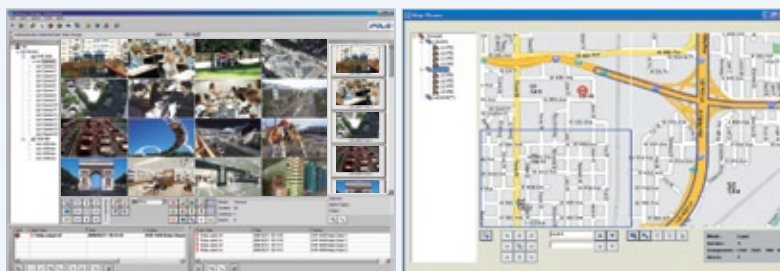


# Anytime, Anywhere

## Real-Time Surveillance

### CMS integrated management (Samsung Network Manager)

*iPOLiS* network products provide a professional CMS, 'Samsung Network Manager'(SNM-64S/P). It can monitor up to 128 channels from anywhere in the world at the same time and supports max. 3 monitor connection for more efficient system control. Users can control bi-directional audio, PTZ functions of cameras, and relays of each unit with ease. It also supports enhanced map viewer and event/alarm management solution for smart network monitoring and convenient search by thumbnail, event, or text category.



### Real-time surveillance with web viewer

With the support of the Web Viewer that can be connected through the Internet, the user can monitor sites anytime, anywhere.



*iPOLiS* Web Viewer

### SDK support

*iPOLiS* products provide the STW SDK kit that allows for 3rd party engineers to develop further programs or functions. It contains various functions such as single/multi live monitoring, DVR recording date playback, DVR recording date back up, configuration control, and discovery.

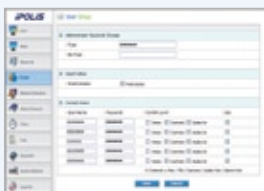
### Dynamic IP registration and DDNS support

Even inexperienced users can easily configure network settings and get a domain name by connecting to [www.samsungipolis.com](http://www.samsungipolis.com), as a stable Dynamic IP is provided.



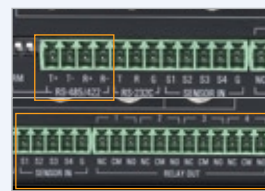
### Highly reliable security system

*iPOLiS* series provides system security in the form of multiple access passwords and control message encryption. Perfect security is possible with password setting by user groups, encryption between cameras and applications, and video connection verification.



### Sensor input/output and remote control

With a sensor input/output function, and PTZ and external device control support, *iPOLiS* enables the user to establish an integrated total security system.



# SNC-550

## High-resolution Day & Night Network Camera

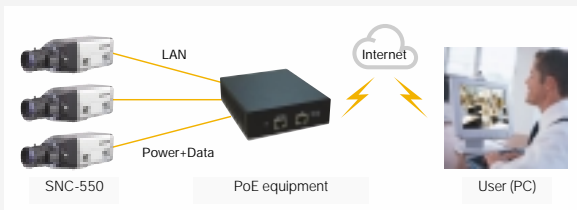
The SNC-550 facilitates the selective application of MPEG-4 or JPEG compression algorithms and high-resolution video transmission at up to 30fps. The SNC-550 supports diverse additional functions including a Day & Night function, 530TV lines of horizontal resolution, PoE, motion detection, and privacy masking.

iPOLiS



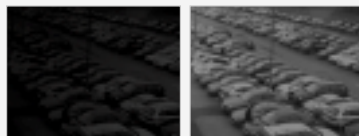
## PoE (Power over Ethernet) support

Since power is supplied through the LAN cables, there will be less complicated cabling and the installation cost will be substantially reduced (IEEE 802.3af).



## Powerful ultra-low sensitivity of as low as 0.002Lux

The SNC-550 provides a powerful night surveillance function that can recognize objects at night with an illumination of as low as 0.002Lux in Sens-up mode.



Conventional network camera

SNC-550

## Day & Night (Removable IR cut filter) and SSNR (Samsung Super Noise Reduction)

The high performance Day & Night function, with an automatic filter removal method and SSNR technology that effectively eliminates noise and ghosting, provides clearer image quality.

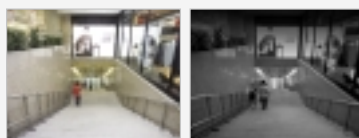


Day

Night

## Analogue output support

Besides network output, the SNC-550 also supports analogue output through BNC connectors.



Color

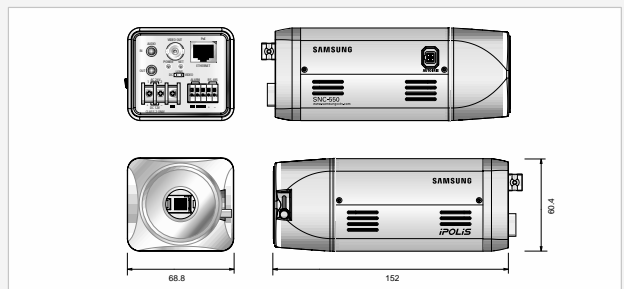
B/W

## Specifications

| Mode                             | SNC-550(N)   | SNC-550(P)                      |
|----------------------------------|--|---------------------------------|
| Power Source                     | 12V DC / 24V AC (±10%) / PoE (IEEE 802.3af)  |                                 |
| Power Consumption                | About 6W   |                                 |
| Hardware                         | CPU: SAMSUNG ARM CPU (200MHz)<br>OS: Embedded Linux  |                                 |
| Camera                           | CCD: 1/3" Super HAD CCD<br>Horizontal Resolution: Color : 530TV lines (Min.) / B/W : 570TV lines (Min.) through BNC<br>Min. Illumination: 0.3Lux@F1.2 (Normal color mode)<br>0.01Lux@F1.2 (B/W mode)<br>0.002Lux@F1.2 (Sens-up mode) |                                 |
| Day & Night                      | Off / Auto selectable (ICR filter change)  |                                 |
| White Balance                    | ATW / AWC / Manual selectable (1,800°K - 10,500°K)   |                                 |
| Sens-up                          | On / Off (Selectable limit 2X ~ 128X)  |                                 |
| SSNR                             | Low / Middle / High / Off selectable   |                                 |
| Lens                             | C / CS-Mount (Easy focus type)   |                                 |
| Compression Method               | MPEG-4 / JPEG selectable video compression, ADPCM audio compression  |                                 |
| Compression / Transmission Speed | Video : Max. VGA 30fps   | Video : Max. VGA 25fps          |
| Image Quality Control            | 5 levels   |                                 |
| Audio Input / Output             | 1 / 1  |                                 |
| Internet Browser                 | MS Internet Explorer ver 5.5 or higher   |                                 |
| Resolution                       | 704 x 480, 704 x 240, 352 x 240  | 704 x 576, 704 x 288, 352 x 288 |
| Security                         | Password (User authentication), Control message encryption   |                                 |
| DIO Supports                     | 1 Sensor input, 1 Alarm output   |                                 |
| Pan / Tilt / Zoom Control        | Support (RS-485)   |                                 |
| User Connection                  | 20 Users   |                                 |
| Protocol Supported               | TCP/IP, DHCP, HTTP, SMTP, FTP, DDNS, PPPoE, NTP  |                                 |
| Misc. Function                   | Motion detection, Privacy masking, Event / Alarm, FTP / E-mail notification  |                                 |
| System Resource                  | 32Bit RISC processor, 64MB SDRAM, 64MB flash, 512KB ROM  |                                 |
| Network Interface                | 10/100 Base-T Ethernet using RJ-45, Static / Dynamic IP support  |                                 |
| Viewer Application               | Network management software / Web viewer   |                                 |
| DDNS                             | Support (xDSL, DHCP, Cable modem, etc)   |                                 |
| SDK                              | 3rd Party SDK support  |                                 |
| Operating Temperature            | 0°C - 40°C   |                                 |
| Dimensions                       | 68.8(W) x 60.4(H) x 152(D)mm   |                                 |
| Weight                           | 570g   |                                 |

## Dimensions

Unit : mm





# SNS-400/100

## 4CH/1CH Video Network Servers

The SNS-400/100 are high efficiency, high-performance 4 channel/1 channel video network servers that convert analogue-based systems into an MPEG-4/JPEG compression format IP surveillance system via the network. Surveillance is possible with a network image output at up to 120fps (CIF).

iPOLiS



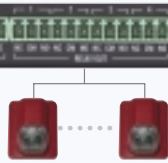
### Remote Pan/Tilt/Zoom control

Remote PTZ camera control is possible with connection through RS-485/422 port. It is also possible to control PTZ menu over the internet with the Web viewer.



### Sensor & Alarm support

An alarm is available through motion detection and event setting with up to 4-sensor input and 4-alarm output support (SNS-400).



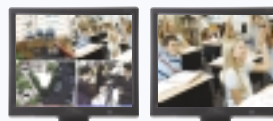
### Storing images when an event occurs

Using a USB memory card, it is possible to store images when the alarm goes off, triggered by motion detection. It is also possible to search images by event in a remote site.



### Analogue output support

Quad-split screen analogue video is supported to verify the input camera's images.



SNS-400

SNS-100

### Rear Panel

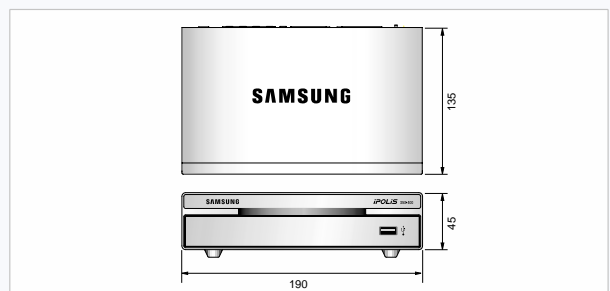


### Specifications

| Mode                             | SNS-400(N)  | SNS-400(P)                          | SNS-100(N)                            | SNS-100(P)                          |
|----------------------------------|---|-------------------------------------|---------------------------------------|-------------------------------------|
| Power Source                     | 12V DC 1.5A   |                                     |                                       |                                     |
| Hardware OS                      | Embedded Linux  |                                     |                                       |                                     |
| Compression Method               | MPEG-4 / JPEG selectable video compression, ADPCM audio compression |                                     |                                       |                                     |
| Video Channel                    | 4 Input / 1 output through BNC                                      |                                     | 1 Input / 1 output through BNC        |                                     |
| Compression / Transmission Speed | Video : Max. CIF 120fps   | Video : Max. CIF 100fps             | Video : Max. VGA 30fps                | Video : Max. VGA 25fps              |
| Image Quality Control            | 5 levels  |                                     |                                       |                                     |
| Audio Input / Output             | 4 / 1   |                                     | 1 / 1                                 |                                     |
| Motion Detection                 | 4 Channel motion detection seperately                               |                                     | 1 Channel motion detection seperately |                                     |
| Serial Connector                 | RS-232C, RS-485/422   |                                     |                                       |                                     |
| Transmission Interface           | Ethernet (TCP/IP)   |                                     |                                       |                                     |
| Internet Browser                 | Windows internet explorer 5.5 or higher                             |                                     |                                       |                                     |
| Resolution                       | 704 x 480<br>704 x 240<br>352 x 240                                 | 704 x 576<br>704 x 288<br>352 x 288 | 704 x 480<br>704 x 240<br>352 x 240   | 704 x 576<br>704 x 288<br>352 x 288 |
| Security                         | Password (User authentication), Control message encryption          |                                     |                                       |                                     |
| USB Port                         | USB 2.0 (Storing event images)                                      |                                     |                                       |                                     |
| DIO Supports                     | 4 Sensor input, 4 Alarm output                                      |                                     | 2 Sensor input, 2 Alarm output        |                                     |
| Pan / Tilt / Zoom Control        | Support (RS-232C, RS-485/422)                                       |                                     |                                       |                                     |
| User Connection                  | 20 Users  |                                     |                                       |                                     |
| Protocol Supported               | TCP/IP, DHCP, HTTP, SMTP, FTP, DDNS, PPPoE, NTP                     |                                     |                                       |                                     |
| Misc. Function                   | Event / Alarm, FTP / E-mail notification                            |                                     |                                       |                                     |
| Network Interface                | 10/100 Base-T ethernet using RJ-45, Static / Dynamic IP support     |                                     |                                       |                                     |
| Viewer Application               | Network management software / Web viewer                            |                                     |                                       |                                     |
| DDNS                             | Support (xDSL, DHCP, Cable modem, etc)                              |                                     |                                       |                                     |
| SDK                              | 3rd Party SDK support   |                                     |                                       |                                     |
| Operating Temperature            | 0°C - 40°C  |                                     |                                       |                                     |
| Dimensions                       | 190(W) x 45(H) x 135(D)mm   |                                     |                                       |                                     |
| Weight                           | 850g  |                                     | 770g                                  |                                     |

### Dimensions

Unit : mm



# *iPOLiS*



The **Eco mark** represents Samsung Techwin's will to create environment-friendly products, and indicates that the product satisfies the EU RoHS Directive.

Design and specifications are subject to change without notice.



**SAMSUNG TECHWIN CO., LTD.**

145-3, Sangdaewon 1-dong, Jungwon-gu, Seongnam-si, Gyeonggi-do Korea 462-703  
Tel: +82-31-740-8151-8 Fax: +82-31-740-8145  
[www.samsungipolis.com](http://www.samsungipolis.com)

**SAMSUNG OPTO-ELECTRONICS AMERICA, LTD.**

1480 Charles Willard St. Carson, CA 90746  
Tel: +1-310-632-1234 Fax: +1-310-632-2195

**SAMSUNG OPTO-ELECTRONICS UK, LTD.**

Samsung House, 1000 Hillswood Drive,  
Hillswood Business Park Chertsey, Surrey KT16 0PS  
Tel: +44-1932-455312 Fax: +44-1932-455325

**TIANJIN SAMSUNG OPTO-ELECTRONICS CO., LTD.**

7 Pingchang Rd., Nankai Dist. Tianjin 300190, P.R. China  
Tel: +86-22-2761-4724(33821) Fax: +86-22-2761-6514

■ DISTRIBUTED BY



I.D-0805